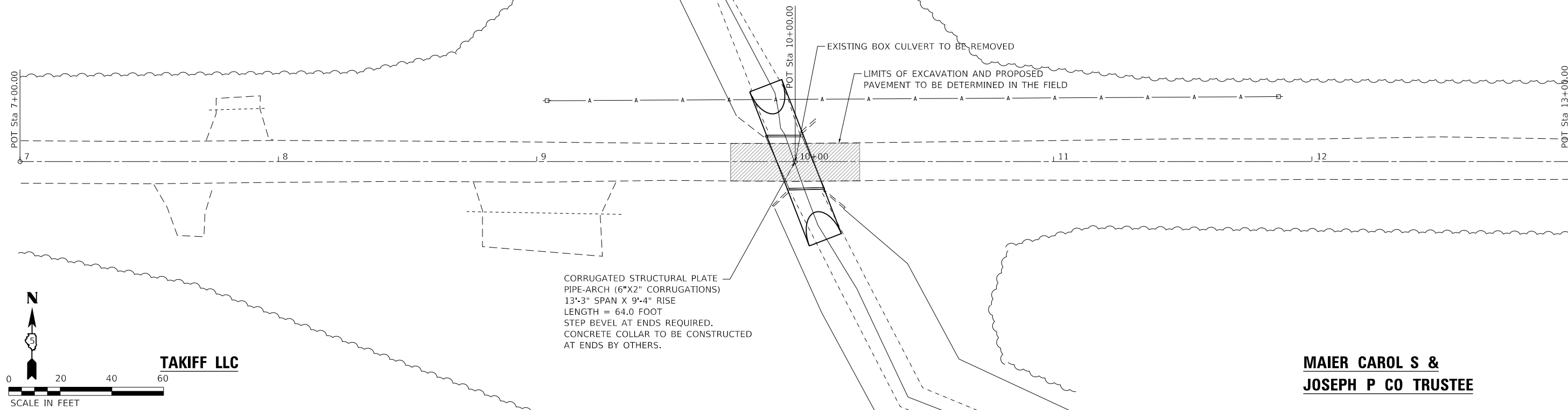


NOTE: NO SALVAGE OF THE EXISTING CONCRETE BOX CULVERT.

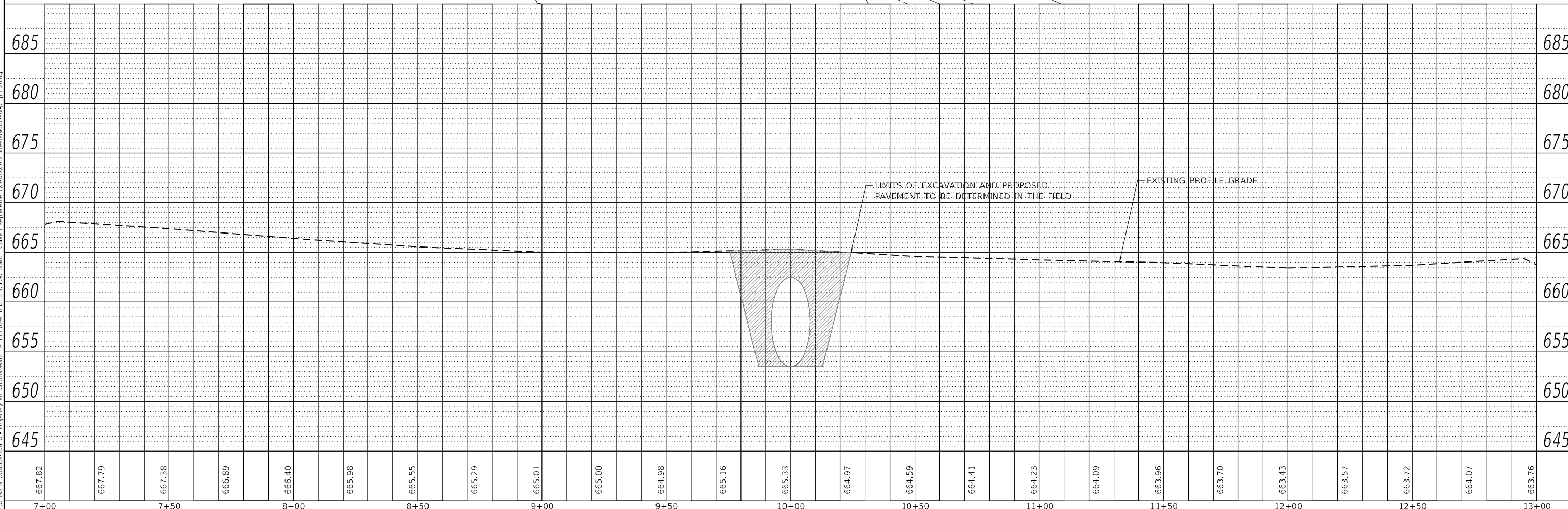
G & A FARMS INC.

G & A FARMS INC.

PLAN	SURVEYED	DATE
	PLOTTED	
	ALIGNED	
	CHECKED	
	FILE NAME	
	NO.	



PROFILE	SURVEYED	DATE
	PLOTTED	
	GRADES CHECKED	
	STRUCTURE NOTATIONS CHECKED	
	NO.	



CORRUGATED STRUCTURAL PLATE
PIPE-ARCH (6"x2" CORRUGATIONS)
13'-3" SPAN X 9'-4" RISE
LENGTH = 64.0 FOOT
STEP BEVEL AT ENDS REQUIRED.
CONCRETE COLLAR TO BE CONSTRUCTED
AT ENDS BY OTHERS.

**MAIER CAROL S &
JOSEPH P CO TRUSTEE**

MODEL: Default	design firm no. 184001036	USER NAME = bjohnson	DESIGNED - BJJ	REVISED -	PIATT COUNTY HIGHWAY DEPARTMENT PLAN AND PROFILE MATERIAL ONLY PROJECT	T.R. RTE. 133	SECTION 23-08139-00-DR	COUNTY PIATT	TOTAL SHEETS 2	SHEET NO. 2	
FILE NAME: C:\pwworks\c\collab\spring - Project\PIATT County\9837 TR 133 over Trib to Willow Branch Culvert Replacement\CADD\CAD_Sheets\9837-ent-plnpr_20.dwg	whks engineers + planners + land surveyors	PLOT SCALE = 480.0000' / ft.	DRAWN - GSJ	REVISED -		SCALE: 1" = 20'	SHEET 1	OF 1	SHEETS	STA. 7+00.00	TO STA. 13+00.00
		PLOT DATE = 6/21/2023	CHECKED - CWC/BJJ	REVISED -		CONTRACT NO.		ILLINOIS		FED. AID PROJECT	
			DATE - 6/21/2023	REVISED -							